

Overview

| | |
|--------------------|------------------------------------|
| Item | Fiber Media Converter |
| Model No. | GOMC-BI3503-20/5303-20 |
| Description | 10/100Base-TX to 100Base-FX |

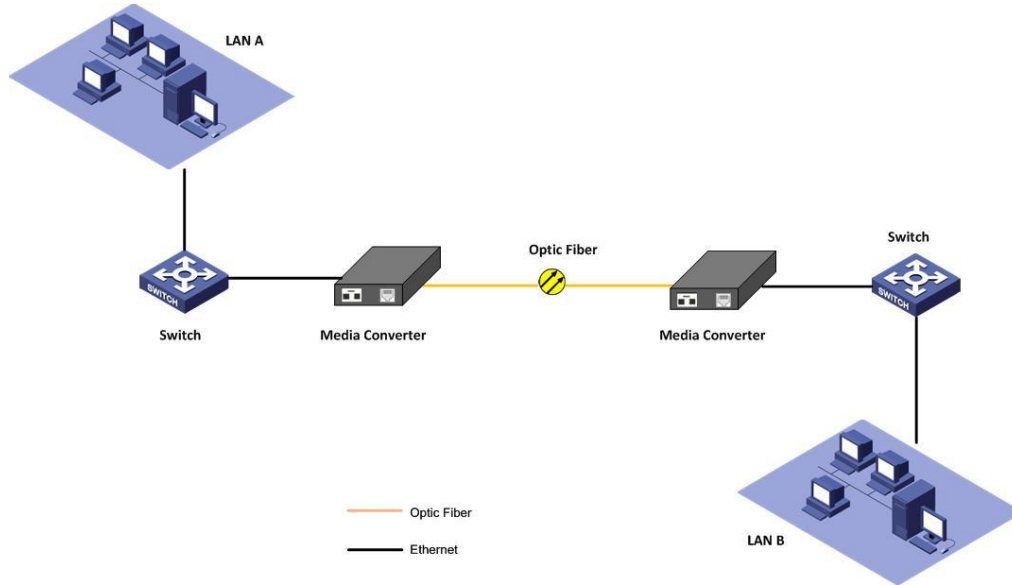


Bi-directional

GOMC-BI3503-20/5303-20 **10/100M Fiber Media Converter** translates the signal from a twist-pair 10/100Base-TX cable to 100Base-FX fiber optic cable, extends data transmission distance from 100m via copper cables to 20km single fiber optic cable

Features

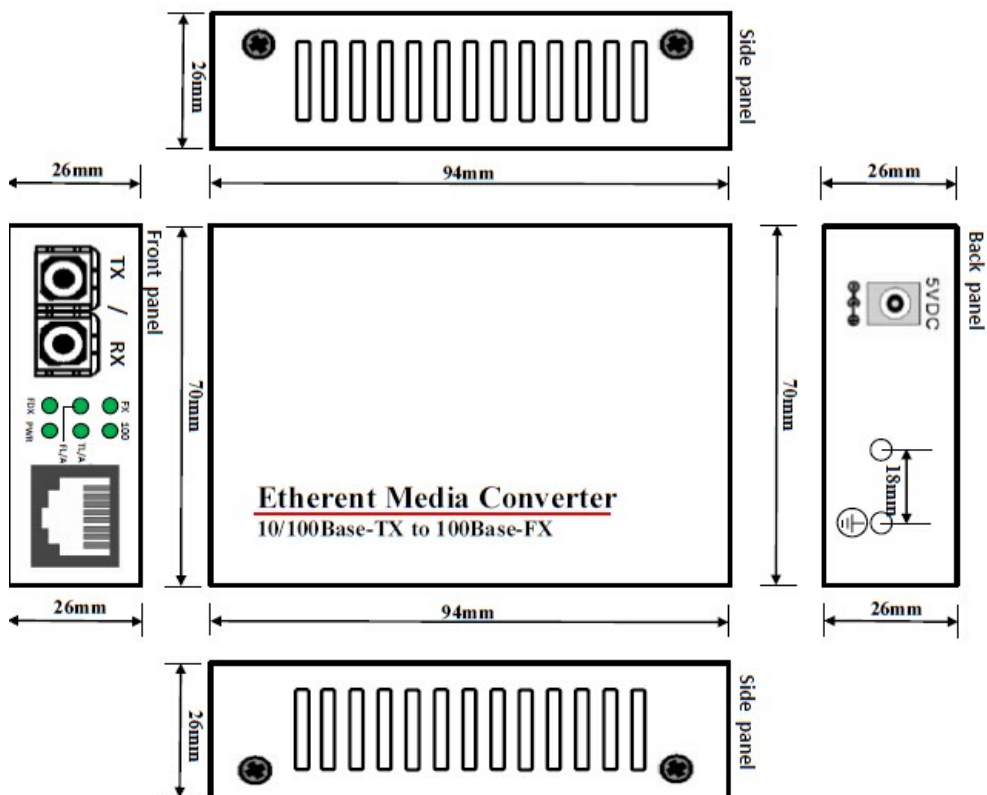
- 10/100Mbps auto-sensed, easily upgrade
- Full-duplex and half-duplex auto-sensed
- MDI/MDI-X Auto Negotiation
- 10/100Mbps store-and-forward
- 100Mbps cut-through transmission
- Packet size up to 1518 bytes
- Supporting VLAN / VoIP / QoS packets
- Support flow control and reduce broadcast packets
- Supporting STP to form a redundant network
- Extremely low power consumption, low heat, stable performance
- Providing Desktop, Wall-mounted, Chassis, DIN-rail installation



Application

1. Network Communication
2. FTTH / FTTB / FTTx
3. ISP Backhaul Networking

Mechanical Dimensions



Technical Indexes

| | |
|-------------------|--|
| Standard | IEEE802.3 10Base-T Ethernet, IEEE802.3u 100Base-TX/FX Fast Ethernet |
| Data Rate | Copper: 10/100M; Fiber: 155M |
| Flow control | Full duplex: flow control; Half duplex: back pressure |
| Cooper Port | No.s of Copper Port: 1 Connector: RJ45 Connector Distance:100m |
| Fiber Port | No.s of Fiber Port: 1 Connector: SC as default Wavelength: 1310/1550nm Distance: 20 Km |
| LED indicators | PWR (power supply); FL/A (optical link/action) FDX (FX full duplex), TL/A (twisted pairs link/action) 100 (100M transmission rate of twisted pairs), FX (100M transmission rate of optical fiber) |
| Power supply | Working power: DC5V 1A AC Power Supply: 100V~ AC240V to 5V1A Or DC Power Supply: -36~-72V to 5V1A External / Internal Power Supply Optional |
| Power consumption | <3W |
| Environment | Operating temperature : -10~55°C Storage Temperature: -40~85°C Relative Humidity: 5% to 95% non-condensing |
| Dimensions | External: 94mmx70mm*26mm Internal: 140mmx110mmx30mm |
| Gross Weight | External : 0.4kg Internal: 0.5kg |